

# Span Notes



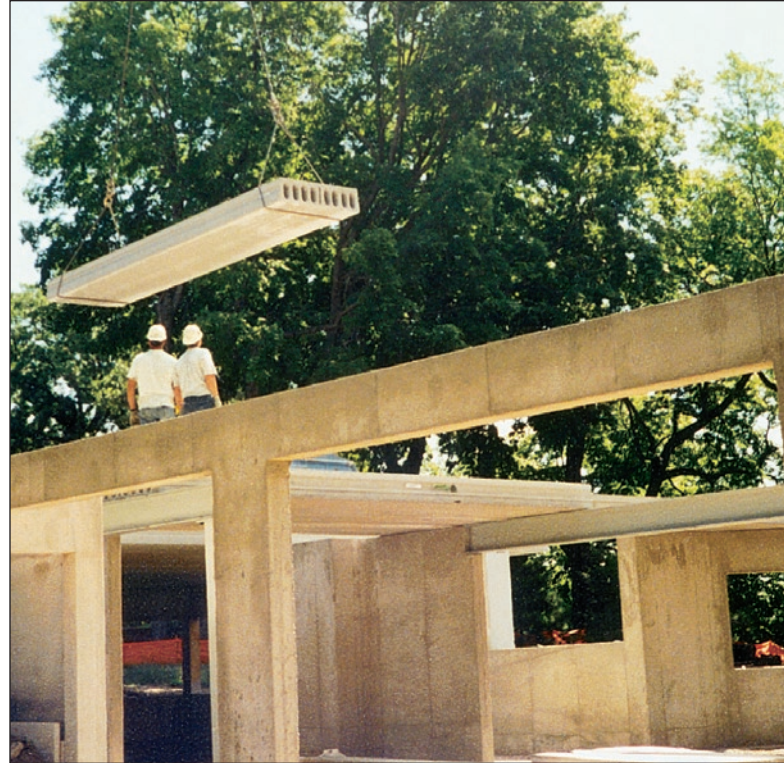
No. 14

## Building a New Home with Spancrete® Is Easy

Since 1958, close to a billion square feet of Spancrete has been used for floors and roofs in a variety of buildings including apartments, condominiums, hotels, motels and, yes, single family homes. Today's homeowner faces the rising costs of lumber and labor while placing more demands on the builder for safety from fire and storm and for a quieter environment. These factors, in addition to new technologies in heating and air conditioning have convinced an increasing number of owners, architects and builders to make Spancrete their material of choice in residential projects.

Many home builders and designers are hesitant to recommend hollowcore plank to the owner because they are unfamiliar with its construction methods and advantages. Whether you are a homeowner, a designer or a contractor, building with Spancrete is easier than you think.

1. Meet with a Spancrete representative. Learn how Spancrete is manufactured and understand the many features, functions and benefits.
2. Review and discuss your plans. Find out how easy it is to install Spancrete on steel frame, masonry or concrete walls. There are no special requirements.
3. Have the representative recommend a plank layout. Eliminate the requirements for load-bearing walls and obtain complete design flexibility.
4. Discuss the loads the floor will have to carry. Spancrete can provide long spans with heavy load carrying capacity. It can sustain roof loads as well as loading required for partitions, tile and stone floors, or even that fireplace you may want in the middle of the room.
5. Understand how easily Spancrete works with other trades. Heating, air conditioning, plumbing and electrical systems are easy to incorporate.
6. Look at your ceiling finish options. Spancrete plank can be easily textured or covered with drywall.
7. Talk about the fire rating and acoustical advantages.
8. Improve your construction schedule. Spancrete is erected quickly and provides an instant work deck for other trades.
9. Obtain Spancrete literature. There is an extensive library of reference tools available for the architect, engineer, builder and owner.
10. Take advantage of Spancrete experience. Sales personnel, engineers and estimators are available to assist you.





## HOW TO ORDER SPANCRETE

1. For a firm estimate, provide your Spancrete manufacturer with a plan showing dimensions, type and thickness of bearing walls, size and location of any beams, as well as size and location of openings. Also provide project location as well as other pertinent information and advise of any problems for crane or truck access.
2. Upon ordering Spancrete, provide a schedule and final plans with a map locating your project. Spancrete will prepare and submit to you for approval an erection drawing showing your plank layout with dimensions and details.
3. Completely review and check all dimensions and details on the drawing submittal. Mark any changes and discrepancies, return promptly and note, with your signature on the drawing, "approved," "approved as noted" or "revise and resubmit." Your project will be produced when written approval is received.
4. Confirm your delivery and erection schedule requirements with your Spancrete producer when you have assurance of a completion date for the walls, as well as the steel beams and lintels. Note that concrete and masonry walls require curing time prior to plank erection.